

Resolution Capital Global Property Securities Fund (Unhedged) Series II - Class A

Monthly Report - 29 February 2024

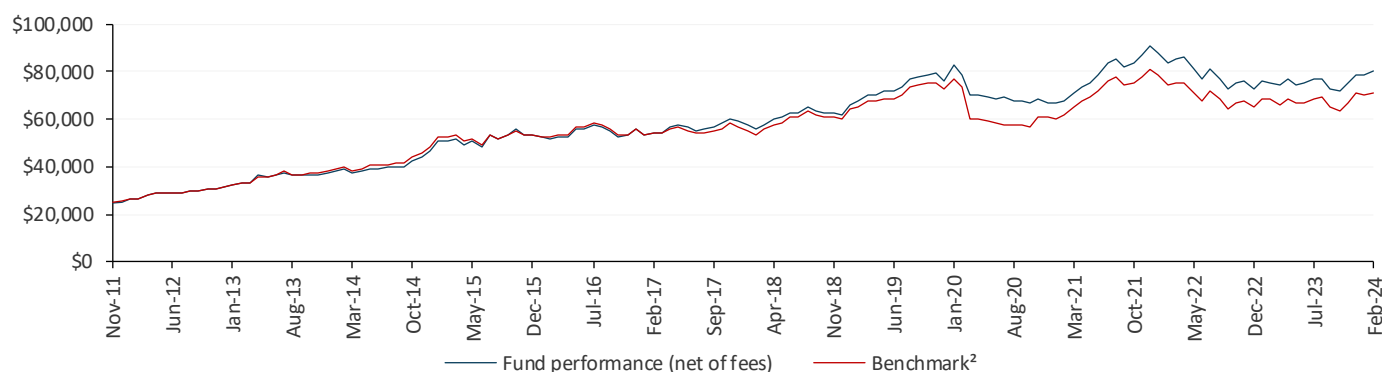
CERTIFIED BY RIAA

Performance Summary

	1 Month %	3 Months %	1 Year %	3 Years p.a. %	5 Years p.a. %	10 Years p.a. %	Since Inception* p.a. %
Fund Return (Net Performance) ¹	1.85	6.02	5.80	5.80	3.26	7.52	9.95
Benchmark ² return	0.91	6.34	4.03	4.53	1.58	6.02	8.88
Value Added (Net Performance)	0.94	-0.32	1.77	1.27	1.68	1.50	1.07

Performance numbers less than one year are cumulative while numbers greater than one year are annualised.
Past performance is no guarantee of future results.

Growth of \$25,000 invested Since Inception*



¹Please note this Fund was previously known as the Perennial Unhedged Global Property Trust. Resolution Capital was appointed the investment manager of the Fund, effective 1 November 2014. Past performance is no guarantee of future results.

²Benchmark is FTSE EPRA/NAREIT Developed Index (AUD Unhedged) Net TRI.

Source: Resolution Capital

Top 5 Weights

Security Name	%
Equinix	7.90
Welltower	7.13
Prologis	6.86
Equity Residential	5.04
Realty Income	4.40

Top 5 Contributors

Security Name	%
Equinix	0.67
Welltower	0.57
Prologis	0.41
Mitsui Fudosan	0.30
Host Hotels & Resorts	0.23

Bottom 5 Contributors

Security Name	%
Big Yellow Group	-0.26
Ventas	-0.21
TAG Immobilien	-0.20
British Land Company	-0.19
Derwent London	-0.17

These are illustrative only and not a recommendation to buy, sell or hold any security.

Fund Details

APIR code	IOF0184AU	Management Fee	1.05% p.a.
ARSN Code	118 076 529	Buy/Sell Spread	+0.20%/-0.20%
*Inception Date	30 November 2011	Distribution Frequency	Quarterly
Fund Size	\$611.2 Million	No. of Stocks	Generally 30 to 60
NAV per Unit	\$1.22	Risk/Return Profile	The Fund's risk band is 6-7 (High - Very high)
Minimum Investment	\$25,000	Platform Availability	https://rescap.com/globalfundunhedged/seriesii
Benchmark	FTSE EPRA/NAREIT Developed Index (AUD Unhedged) Net TRI	Investment Timeframe	Medium to long term, being 5 or more years

Resolution Capital Global Property Securities Fund (Unhedged) Series II - Class A

Monthly Report - 29 February 2024

Market Commentary

The FTSE EPRA/NAREIT Developed Index (AUD Unhedged) produced a total return of 0.9% for the month ended February 2024. All regions posted negative returns in the month except for the U.S. and Hong Kong as multiple markets digested a mixture of concerning economic data points. UK, Europe, and Japan reported economic data signalling slower economic growth, and the term “technical recession” picked up steam. In addition, rhetoric from central banks remains hawkish, providing little encouragement for growth prospects in the near-term.

Hong Kong was the top performing market in the global index, returning 4.7% in local currency terms, and the Portfolio’s underweight position detracted slightly from relative returns. The region has been a weak relative performer in recent quarters but benefited in February from the Hong Kong government lifting certain stamp duty measures in an attempt to increase real estate transaction volumes.

The U.S. returned 1.7% in local currency terms, outperforming the global index. Year-end earnings results in the U.S. pointed to solid operations even as rent growth continues to slow from elevated levels in most sectors. U.S. office remains pressured by weak demand. Meanwhile, economic data suggests the U.S. economy remains resilient, which is supportive of the growth prospects for property sectors correlated with productivity and job growth. Portfolio exposure to the U.S. contributed positively to relative returns due to stock selection.

Continental Europe was the weakest region, returning -7.4% in local currency terms, and the Portfolio’s underweight position contributed modestly to relative returns.

Several property sectors posted negative returns in February, but data centres stood out and exhibited strength.

Data Centres, the strongest performing sector, returned 6.5% in local currency terms. Robust data centre demand is poised to be amplified by growth in artificial intelligence (AI) over the coming quarters. The portfolio’s overweight position to data centres benefitted relative returns.

Office was a weak performing sector, returning -1.5% in local currency terms, with the sector underperforming in multiple regions. In the U.S., earnings results featured FY24 guidance that contemplates declining occupancy levels and deteriorating leasing economics. Meanwhile, in UK/Europe, a deteriorating economic backdrop drove a recalibration of prospective job growth and office demand. The portfolio’s underweight exposure to office contributed positively to relative returns.

There were several notable REIT announcements during the month impacting a number of portfolio holdings.

February featured the first U.S. REIT IPO since 2021. American Healthcare REIT (AHR), a US\$4.5B diversified healthcare REIT raised \$770m in an IPO in early-February. While it was somewhat encouraging to see a new REIT IPO in the region, pricing on the offering was materially below consensus NAV per share estimates.

Welltower (WELL), a U.S. diversified healthcare REIT with primarily seniors housing exposure, announced a US\$1B acquisition and strategic partnership with Affinity Living Communities in which WELL would acquire 25 wellness housing properties (amenity rich age-restricted residential) in the Pacific Northwest for \$970m, or about \$250k per unit.

Belgian listed storage REIT Shurgard (SHUR) announced a €130m acquisition of Pickens Self-storage in Germany. The portfolio consists of six properties that amount to ~30k sqm, suggesting pricing of ~€4k per sqm. SHUR expects to stabilize the portfolio at a 7% yield.

U.S. net lease REIT, Realty Income (O), announced a €527m sale-leaseback transaction for 82 properties in Europe. These properties are leased to affiliates of Decathlon SE, one of the world’s leading sporting goods retailers with an investment-grade rated balance sheet. The portfolio includes properties located in Germany, France, Spain, Italy, and Portugal.

Unibail-Rodamco-Westfield (URW) announced it would reinstate a cash dividend for the first time since 2019. The €3.5/share dividend represents a 26% FFO payout ratio and a 3.7% dividend yield. While URW still has work to do in reducing leverage, in part, the cash dividend signals management’s optimism regarding asset sale progress and moderating pressure on asset values.

Resolution Capital Global Property Securities Fund (Unhedged) Series II - Class A

Monthly Report - 29 February 2024

Signatory of:



Contact Us

Investor Contact Details

Pinnacle Investment Management

Email: service@pinnacleinvestment.com

Phone: 1300 010 311

Adviser Contact Details

Pinnacle Investment Management

Email: distribution@pinnacleinvestment.com

Phone: 1300 010 311

Disclaimer: This communication is prepared by Resolution Capital Limited ('Resolution Capital') (ABN 50 108 584 167, AFSL 274491) as the investment manager of the Resolution Capital Global Property Securities Fund (Unhedged) - Series II (ARSN 118 076 529) ('the Fund'). Pinnacle Fund Services Limited ('PFSL') (ABN 29 082 494 362, AFSL 238371) is the product issuer of the Funds. PFSL is not licensed to provide financial product advice. PFSL is a wholly-owned subsidiary of the Pinnacle Investment Management Group Limited ('Pinnacle') (ABN 22 100 325 184).

The Product Disclosure Statement ('PDS') and Target Market Determination ('TMD') of the Fund are available via the links below. Any potential investor should consider the PDS and TMD before deciding whether to acquire, or continue to hold units in, the Fund.

Links to the Product Disclosure Statement: [IOF0184AU](#), links to the Target Market Determination: [IOF0184AU](#).

For historic TMD's please contact Pinnacle client service Phone 1300 010 311 or Email service@pinnacleinvestment.com.

This communication is for general information only. It is not intended as a securities recommendation or statement of opinion intended to influence a person or persons in making a decision in relation to investment. It has been prepared without taking account of any person's objectives, financial situation or needs. Any persons relying on this information should obtain professional advice before doing so. Past performance is for illustrative purposes only and is not indicative of future performance. Whilst Resolution Capital, PFSL and Pinnacle believe the information contained in this communication is reliable, no warranty is given as to its accuracy, reliability or completeness and persons relying on this information do so at their own risk. Subject to any liability which cannot be excluded under the relevant laws, Resolution Capital, PFSL and Pinnacle disclaim all liability to any person relying on the information contained in this communication in respect of any loss or damage (including consequential loss or damage), however caused, which may be suffered or arise directly or indirectly in respect of such information. This disclaimer extends to any entity that may distribute this communication. Any opinions and forecasts reflect the judgment and assumptions of Resolution Capital and its representatives on the basis of information available as at the date of publication and may later change without notice. Any projections contained in this presentation are estimates only and may not be realised in the future. Unauthorised use, copying, distribution, replication, posting, transmitting, publication, display, or reproduction in whole or in part of the information contained in this communication is prohibited without obtaining prior written permission from Resolution Capital. Pinnacle and its associates may have interests in financial products and may receive fees from companies referred to during this communication.

RIAA's RI Certification Symbol signifies that a product or service offers an investment style that takes into account environmental, social, governance or ethical considerations. The Symbol also signifies that the Resolution Capital Global Property Securities Fund (Managed Fund) adheres to the strict operational and disclosure practices required under the Responsible Investment Certification Program for the category of Product. The Certification Symbol is a Trademark of the Responsible Investment Association Australasia (RIAA). Detailed information about RIAA, the Symbol and the Resolution Capital Global Property Securities Fund (Managed Fund) methodology, performance and stock holdings can be found at www.responsiblereturns.com.au, together with details about other responsible investment products certified by RIAA. ³

³. The Responsible Investment Certification Program does not constitute financial product advice. Neither the Certification Symbol nor RIAA recommends to any person that any financial product is a suitable investment or that returns are guaranteed. Appropriate professional advice should be sought prior to making an investment decision. RIAA does not hold an Australian Financial Services Licence.